



PHP

PRESSURE TRANSMITTER FOR PRECISION MEASUREMENTS

The **PHP** digital pressure transducer is a high accuracy and performance for precision pressure measurement component that uses either RS-232 to communicate with host computer and analog output. The PHP have an excellent small temperature error below 0.035% in the range of -10 ~ 50°C. The communication S/W is included in delivery.

- VDC, mA Analog output
- RS232 Digital output
- Measuring range 0 ~ 150 MPa
- 0.035% FS accuracy
- Gauge and absolute measurement
- Stainless steel media-wetted materials
- CE Certified
- Measurement and test benches
- Calibration technology
- Laboratories
- Plant construction and machine building

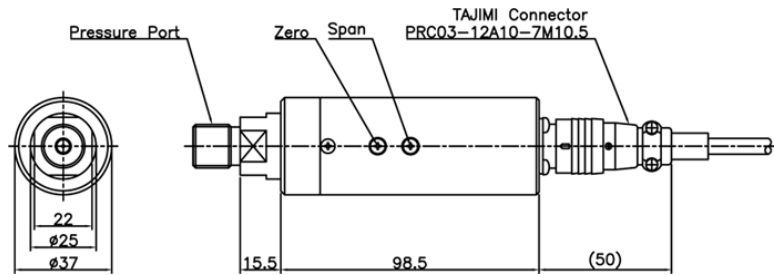
01 Specification

| | | |
|-------------|-------------------------|---|
| Range | Gauge Pressure | 0 ~ 15, 35, 100, 200, 350, 700 kPa 0 ~ 2, 3.5, 7, 10, 20, 25, 35, 40, 60, 100, 150 MPa |
| | Absolute Pressure | 0 ~ 100, 200, 350, 700 kPa / 0 ~ 2, 3.5, 7 MPa |
| | Compound Pressure | -100 ~ 100, 200, 350, 700 kPa / -0.1 ~ 2, 3.5 MPa |
| Performance | Accuracy | ± 0.035% FS (Gauge pressure) ± 0.05% FS (Compound, Absolute pressure) |
| | Thermal Effect on Zero | ± 0.035% FS |
| | Thermal Effect on Span | ± 0.035% FS |
| | Long-term Stability | ± 0.05% FS/year |
| | Compensated Temp. Range | -10 ~ 50 °C |
| | Operating Temp. Range | -20 ~ 80 °C |
| Electrical | Excitation | 11 ~ 32 VDC |
| | Analog Output | 0 ~ 5 VDC, 1 ~ 5 VDC, 0 ~ 10 VDC, 4 ~ 20 mA (3, 4 wire) |
| | Digital Output | RS232 (19200, 8, n, 1) |
| | Electrical Connection | TAJIMI PRC03-21A10-7F / PRC03-12A10-7M10.5 + 3m cable |
| Physical | Proof Pressure | ≤ 100 MPa : 150% FS Max. / > 100 MPa : 110% FS Max. |
| | Burst Pressure | ≤ 100 MPa : 200% FS Min. / > 100 MPa : 110% FS Min. |
| | Vibration | 49.1m/s ² {5G}, 10~500Hz |
| | Shock | 490m/s ² {50G} |
| | Pressure port | R(PT) 1/8", G(PF) 1/8", R(PT) 1/4", G(PF) 1/4", R(PT) 3/8", G(PF) 3/8", (NPT) 1/4" |
| | Media-Wetted Materials | Stainless Steel 316L, Viton (>35 MPa : Stainless Steel 303, Titanium 87% Alloy) |
| | Weight | Connector type : Approx. 270g (Sensor Only) |



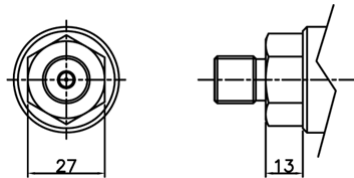
02 DIMENSIONS

≤ 3.5MPa



| Pin No. | Wire Color | Connections |
|---------|------------|-----------------|
| A | White | GND |
| B | Red | Excitation ⊕ |
| C | Shield | FG |
| D | Green | Analog Output ⊕ |
| E | Yellow | TXD |
| F | Black | GND |
| G | Blue | RXD |

> 3.5MPa



03 Order Information

PHP C 0100 R D T G-P

